

A-1

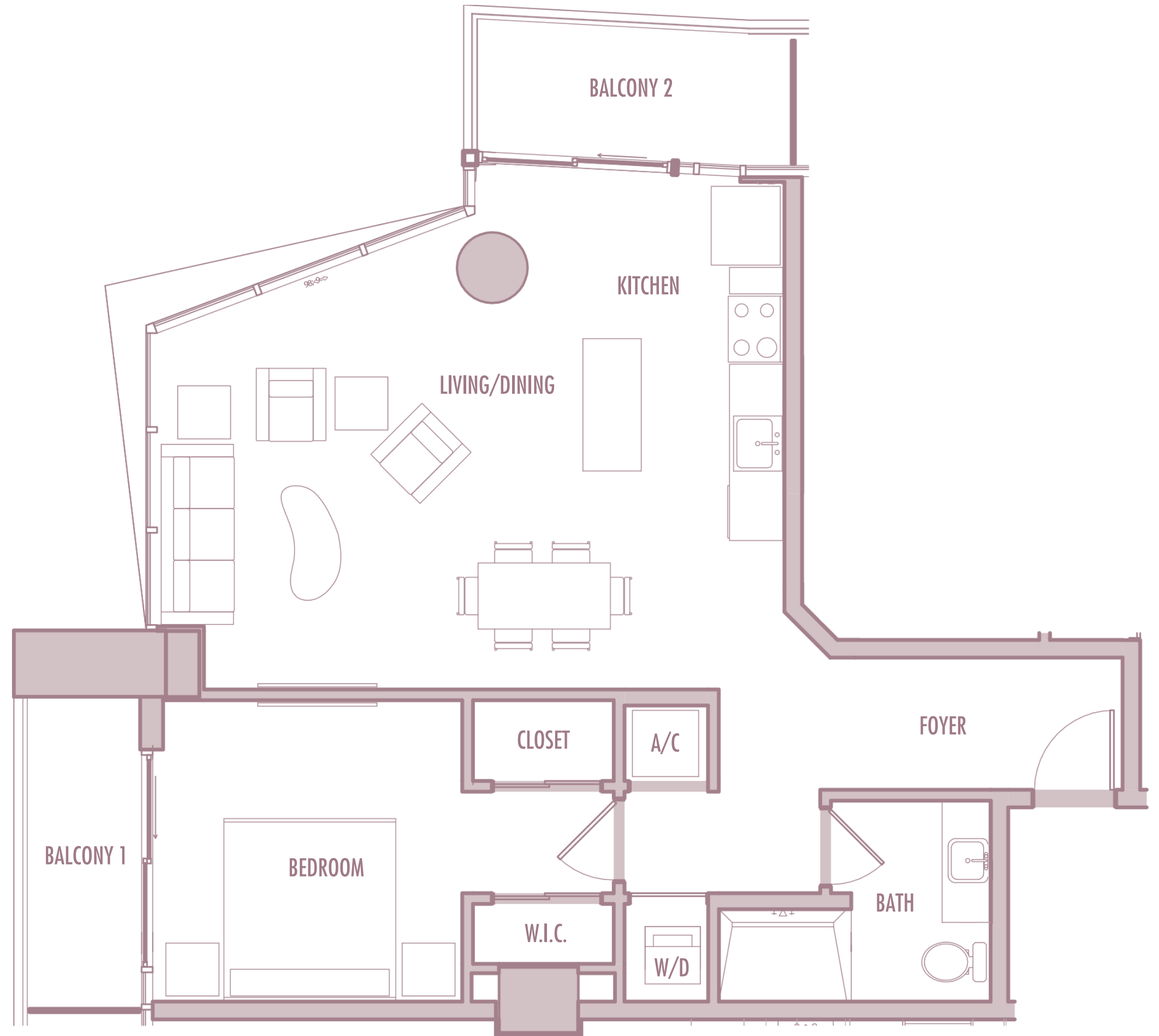
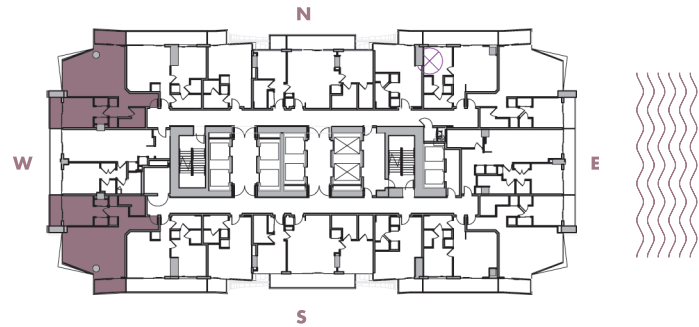
1 BEDROOM + 1 BATHROOM

LEVELS : 36-49

INTERIOR : 885 SqFt 82 SqM

BALCONY : 125 SqFt 12 SqM

TOTAL : 1,010 SqFt 94 SqM



Given the nature of condominium ownership, the Unit boundaries are precisely defined in such a manner so that all components of the Building which are (or are potentially) utilized either by other Units or the Common Elements are excluded from the Unit. This would exclude, for instance, all structural walls, columns etc. and essentially limits the Unit boundaries to the interior airspace between the perimeter walls and excludes all interior structural components. For the precise Unit boundaries, see Section 3.2 of the Declaration. For your reference, the area of the Unit, determined in accordance with these defined Unit boundaries, is set forth hereon (and labeled as "Unit Area"). Please note that the unique way of defining the boundaries actually makes the Unit appear to be smaller than it actually would be if standard architectural measuring techniques were used. Typically, apartments are measured to the exterior boundaries of the exterior walls and to the centerline of interior demising walls or to the exterior of walls adjoining corridors or other Common Elements without excluding areas that may be occupied by columns or other structural components.

A-2

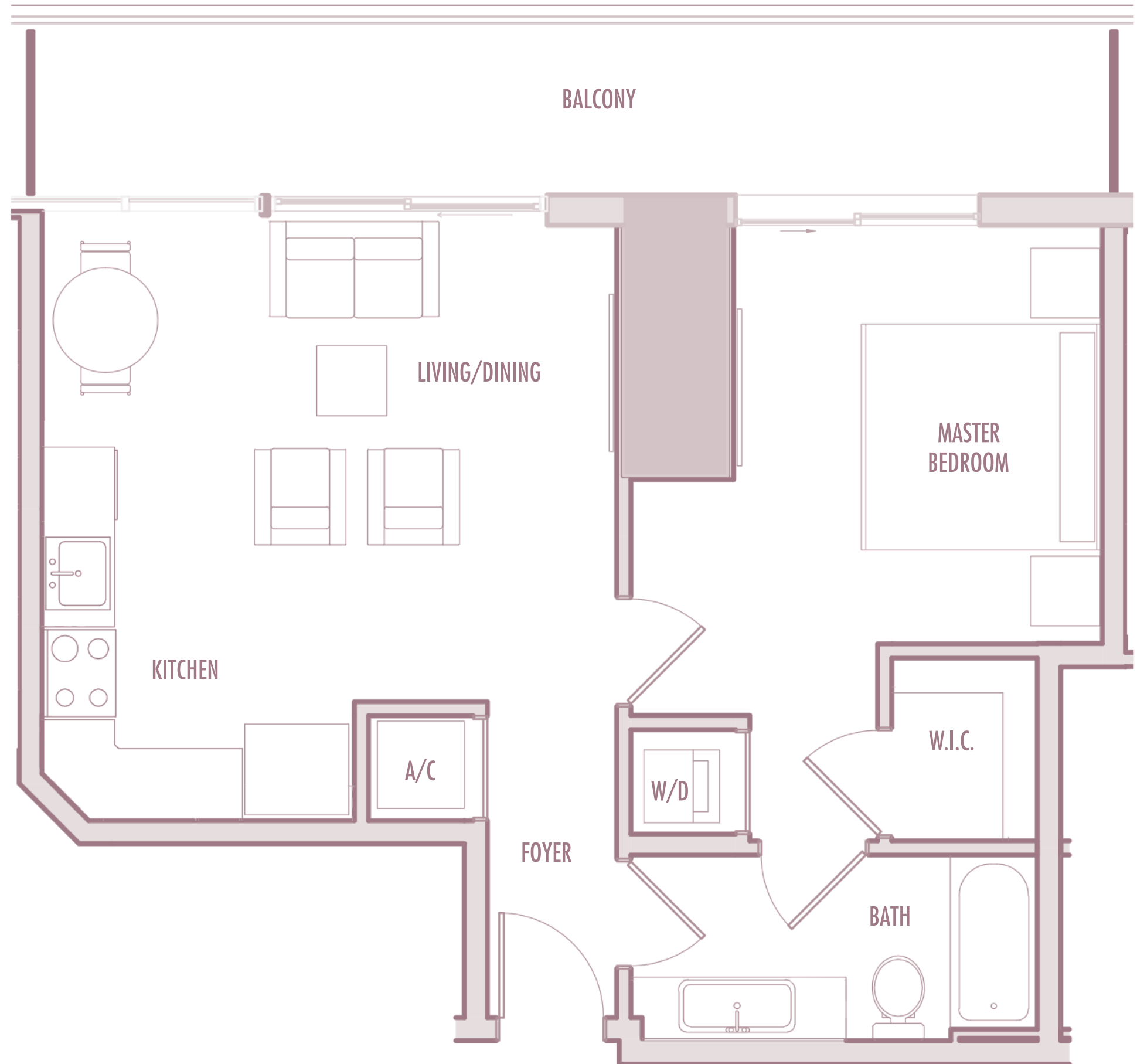
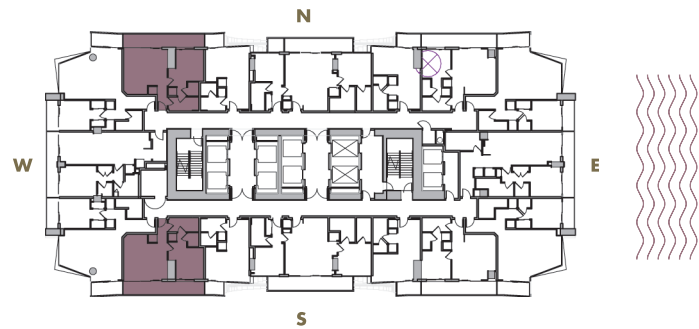
1 BEDROOM + 1 BATHROOM

LEVELS : 36-49

INTERIOR : 665 SqFt 62 SqM

BALCONY : 170 SqFt 16 SqM

TOTAL : 835 SqFt 78 SqM



Given the nature of condominium ownership, the Unit boundaries are precisely defined in such a manner so that all components of the Building which are (or are potentially) utilized either by other Units or the Common Elements are excluded from the Unit. This would exclude, for instance, all structural walls, columns etc. and essentially limits the Unit boundaries to the interior airspace between the perimeter walls and excludes all interior structural components. For the precise Unit boundaries, see Section 3.2 of the Declaration. For your reference, the area of the Unit, determined in accordance with these defined Unit boundaries, is set forth hereon (and labeled as "Unit Area"). Please note that the unique way of defining the boundaries actually makes the Unit appear to be smaller than it actually would be if standard architectural measuring techniques were used. Typically, apartments are measured to the exterior boundaries of the exterior walls and to the centerline of interior demising walls or to the exterior of walls adjoining corridors or other Common Elements without excluding areas that may be occupied by columns or other structural components.

A-3

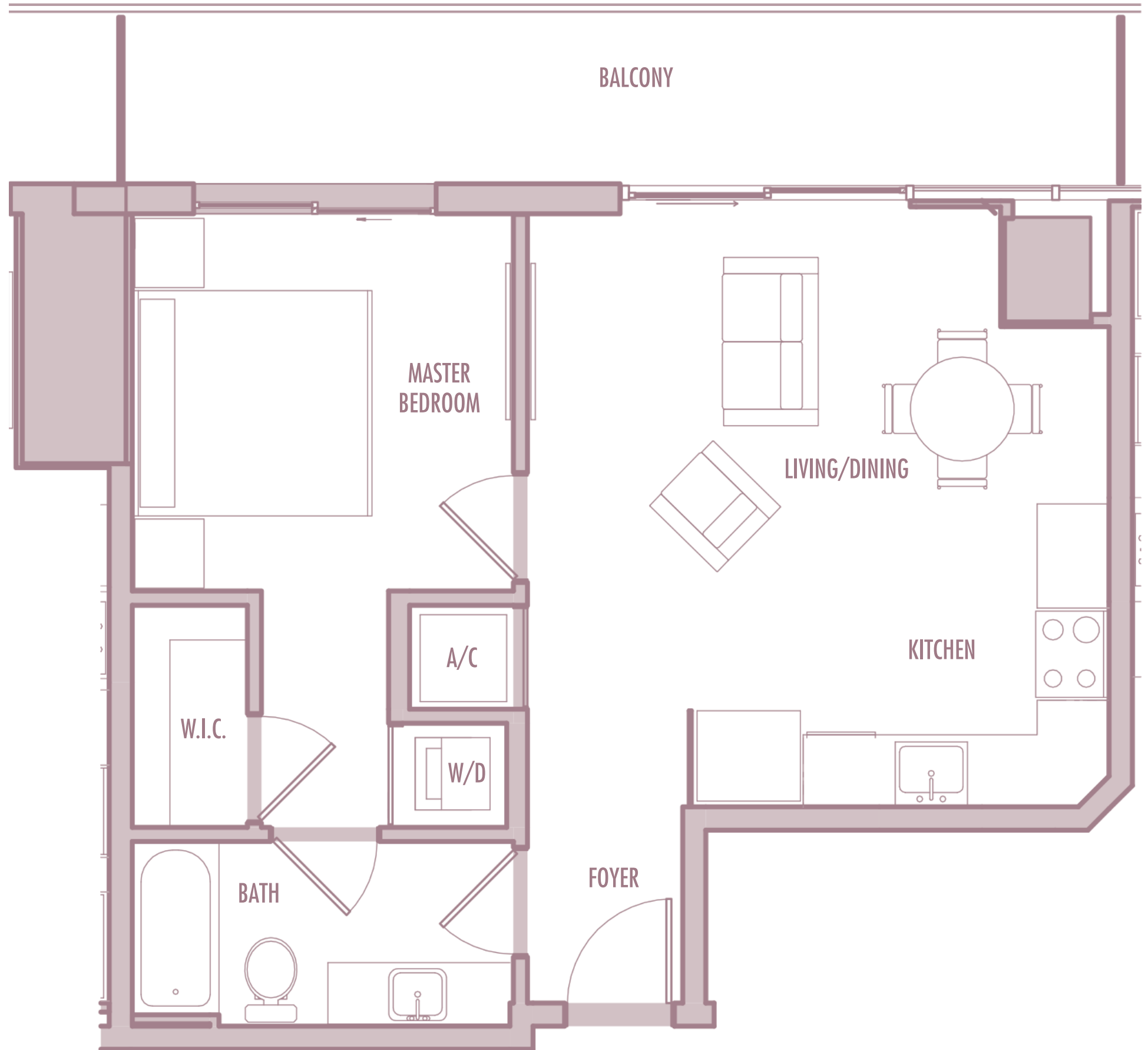
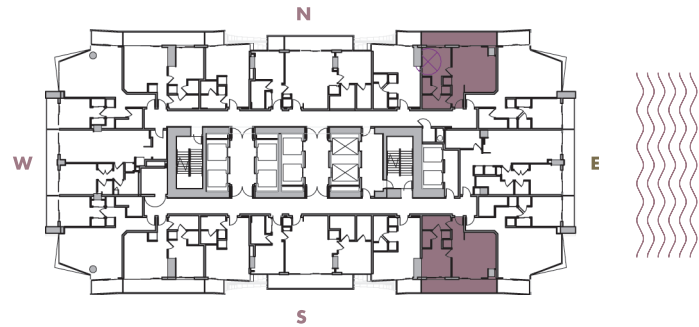
1 BEDROOM + 1 BATHROOM

LEVELS : 36-49

INTERIOR : 645 SqFt 60 SqM

BALCONY : 160 SqFt 15 SqM

TOTAL : 805 SqFt 75 SqM



Given the nature of condominium ownership, the Unit boundaries are precisely defined in such a manner so that all components of the Building which are (or are potentially) utilized either by other Units or the Common Elements are excluded from the Unit. This would exclude, for instance, all structural walls, columns etc. and essentially limits the Unit boundaries to the interior airspace between the perimeter walls and excludes all interior structural components. For the precise Unit boundaries, see Section 3.2 of the Declaration. For your reference, the area of the Unit, determined in accordance with these defined Unit boundaries, is set forth hereon (and labeled as "Unit Area"). Please note that the unique way of defining the boundaries actually makes the Unit appear to be smaller than it actually would be if standard architectural measuring techniques were used. Typically, apartments are measured to the exterior boundaries of the exterior walls and to the centerline of interior demising walls or to the exterior of walls adjoining corridors or other Common Elements without excluding areas that may be occupied by columns or other structural components.

A-4

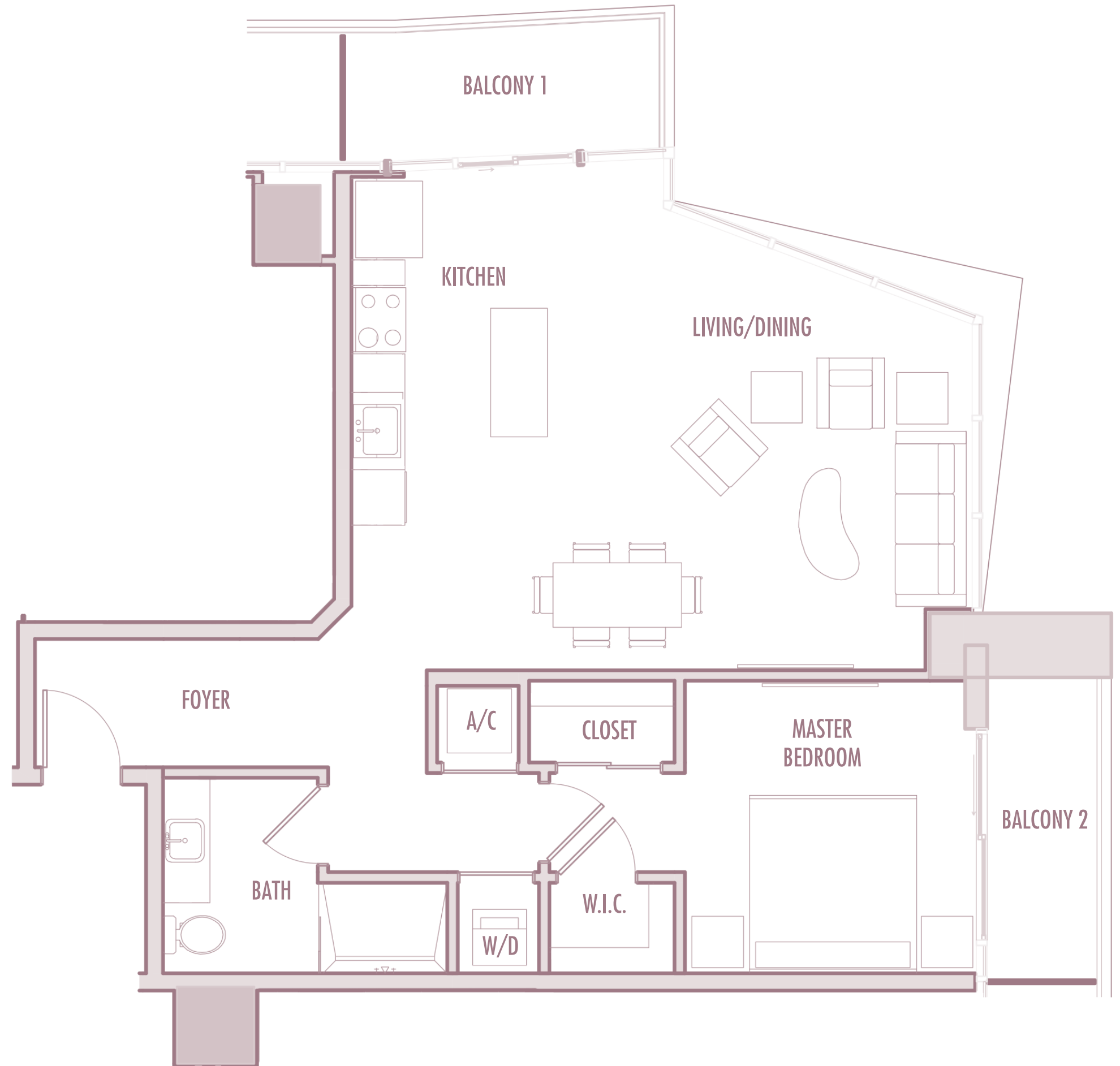
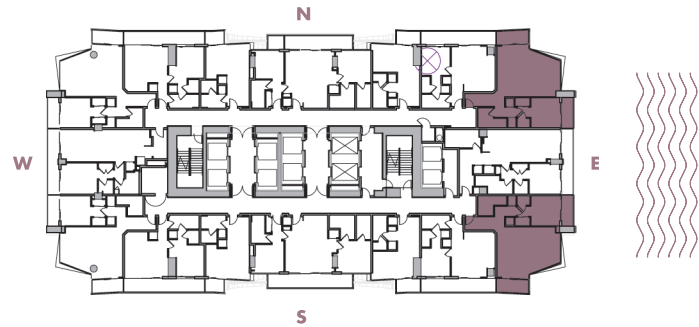
1 BEDROOM + 1 BATHROOM

LEVELS : 36-49

INTERIOR : 890 SqFt 83 SqM

BALCONY : 125 SqFt 12 SqM

TOTAL : 1,015 SqFt 94 SqM



Given the nature of condominium ownership, the Unit boundaries are precisely defined in such a manner so that all components of the Building which are (or are potentially) utilized either by other Units or the Common Elements are excluded from the Unit. This would exclude, for instance, all structural walls, columns etc. and essentially limits the Unit boundaries to the interior airspace between the perimeter walls and excludes all interior structural components. For the precise Unit boundaries, see Section 3.2 of the Declaration. For your reference, the area of the Unit, determined in accordance with these defined Unit boundaries, is set forth hereon (and labeled as "Unit Area"). Please note that the unique way of defining the boundaries actually makes the Unit appear to be smaller than it actually would be if standard architectural measuring techniques were used. Typically, apartments are measured to the exterior boundaries of the exterior walls and to the centerline of interior demising walls or to the exterior of walls adjoining corridors or other Common Elements without excluding areas that may be occupied by columns or other structural components.

A-5

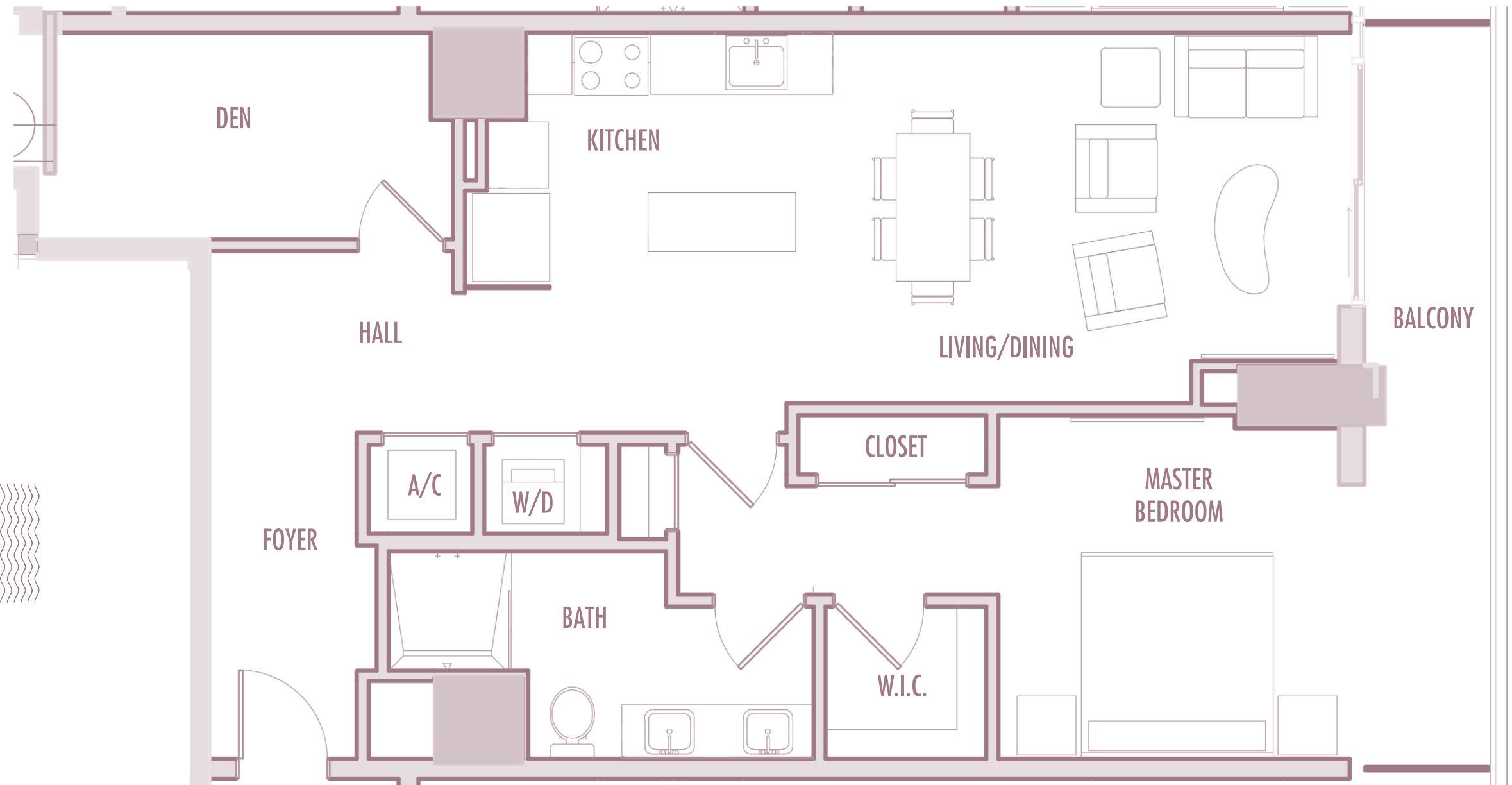
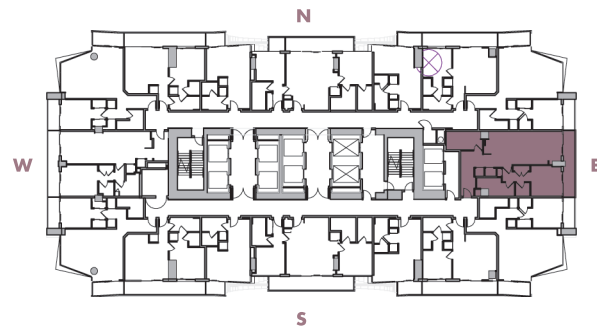
1 BEDROOM + DEN + 1 BATHROOM

LEVELS : 36-49

INTERIOR : 1,045 SqFt 97 SqM

BALCONY : 120 SqFt 11 SqM

TOTAL : 1,165 SqFt 108 SqM



Given the nature of condominium ownership, the Unit boundaries are precisely defined in such a manner so that all components of the Building which are (or are potentially) utilized either by other Units or the Common Elements are excluded from the Unit. This would exclude, for instance, all structural walls, columns etc. and essentially limits the Unit boundaries to the interior airspace between the perimeter walls and excludes all interior structural components. For the precise Unit boundaries, see Section 3.2 of the Declaration. For your reference, the area of the Unit, determined in accordance with these defined Unit boundaries, is set forth hereon (and labeled as "Unit Area"). Please note that the unique way of defining the boundaries actually makes the Unit appear to be smaller than it actually would be if standard architectural measuring techniques were used. Typically, apartments are measured to the exterior boundaries of the exterior walls and to the centerline of interior demising walls or to the exterior of walls adjoining corridors or other Common Elements without excluding areas that may be occupied by columns or other structural components.

A-6

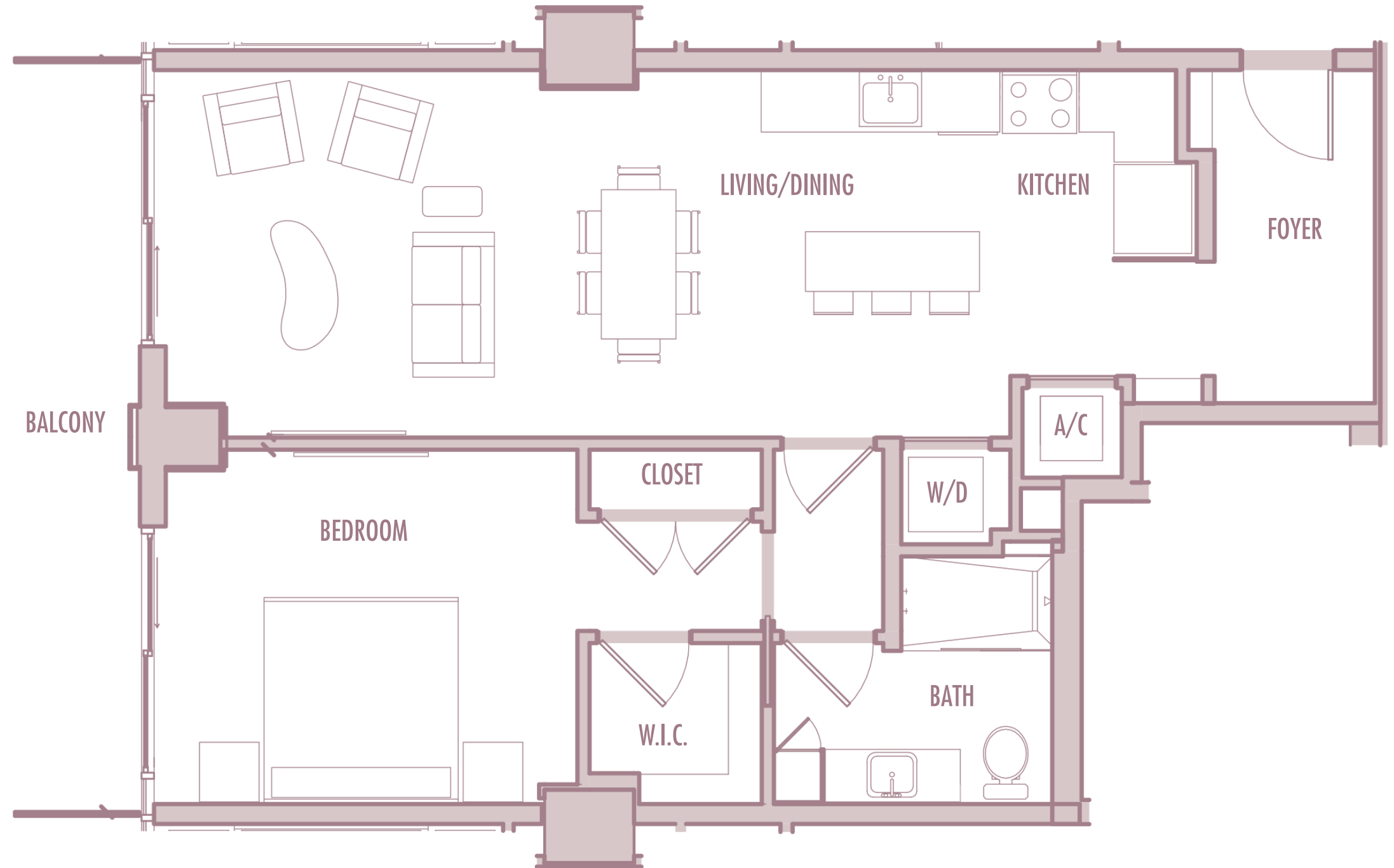
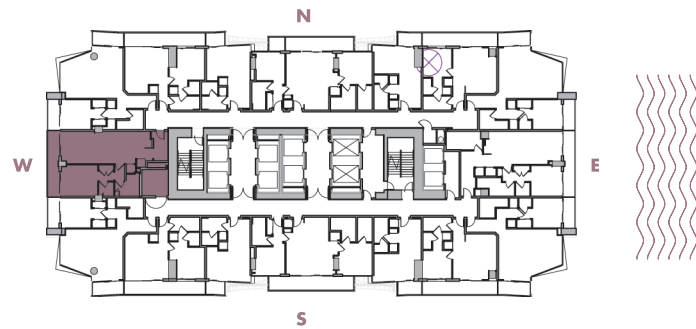
1 BEDROOM + 1 BATHROOM

LEVELS : 36-54

INTERIOR : 915 SqFt 85 SqM

BALCONY : 120 SqFt 11 SqM

TOTAL : 1,035 SqFt 96 SqM



Given the nature of condominium ownership, the Unit boundaries are precisely defined in such a manner so that all components of the Building which are (or are potentially) utilized either by other Units or the Common Elements are excluded from the Unit. This would exclude, for instance, all structural walls, columns etc. and essentially limits the Unit boundaries to the interior airspace between the perimeter walls and excludes all interior structural components. For the precise Unit boundaries, see Section 3.2 of the Declaration. For your reference, the area of the Unit, determined in accordance with these defined Unit boundaries, is set forth hereon (and labeled as "Unit Area"). Please note that the unique way of defining the boundaries actually makes the Unit appear to be smaller than it actually would be if standard architectural measuring techniques were used. Typically, apartments are measured to the exterior boundaries of the exterior walls and to the centerline of interior demising walls or to the exterior of walls adjoining corridors or other Common Elements without excluding areas that may be occupied by columns or other structural components.

B-17

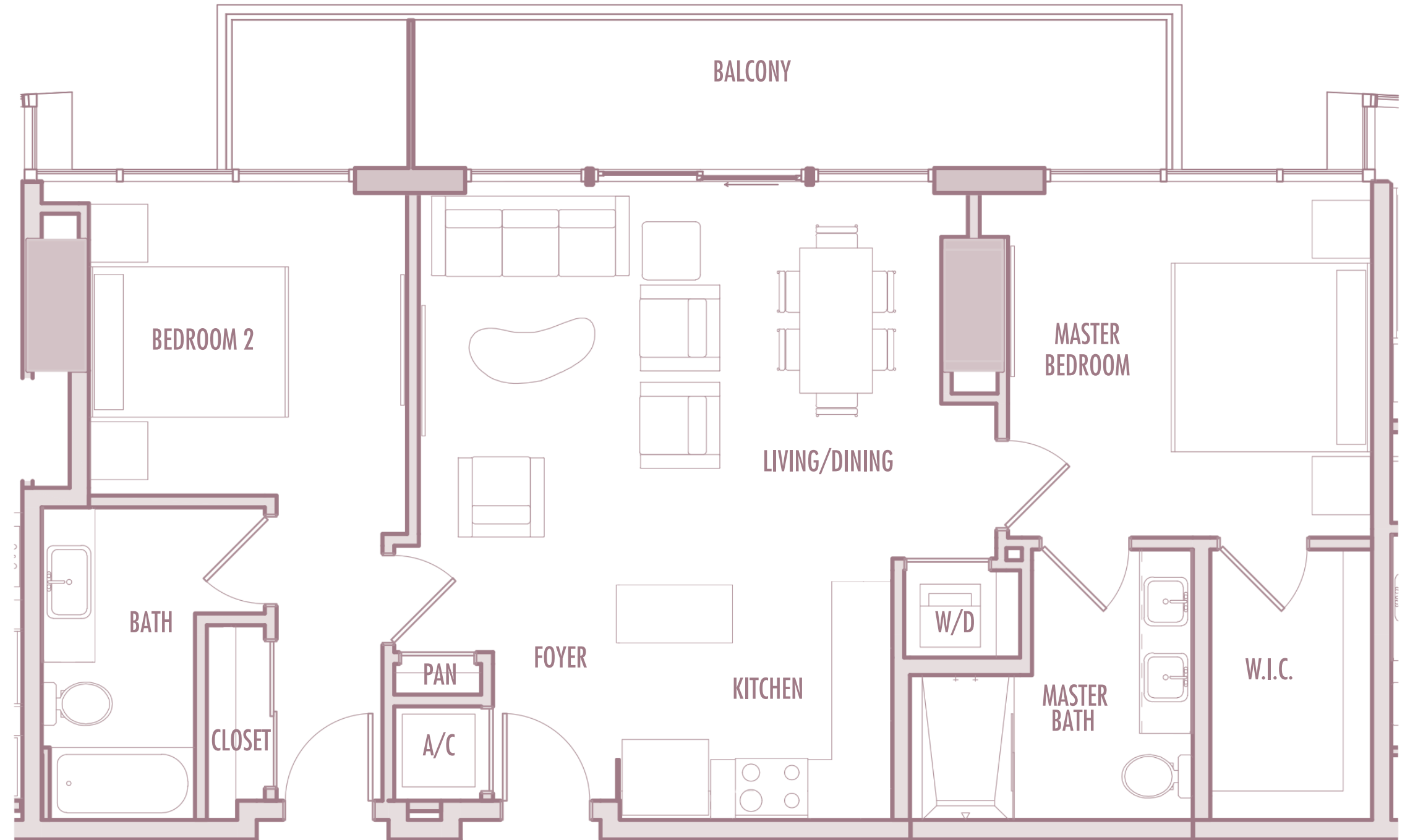
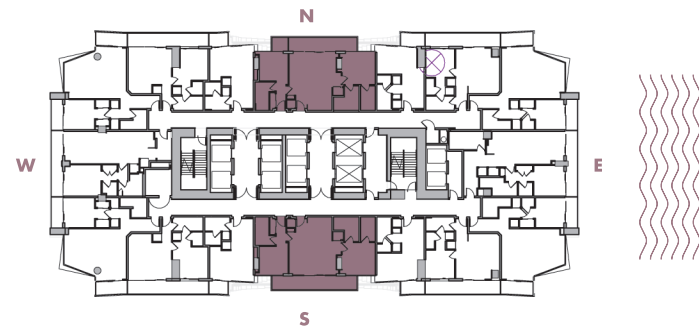
2 BEDROOM + 2 BATHROOM

LEVELS : 36-49

INTERIOR : 1,055 SqFt 98 SqM

BALCONY : 190-250 SqFt 18-23 SqM

TOTAL : 1,245-1,305 SqFt 116-121 SqM



Given the nature of condominium ownership, the Unit boundaries are precisely defined in such a manner so that all components of the Building which are (or are potentially) utilized either by other Units or the Common Elements are excluded from the Unit. This would exclude, for instance, all structural walls, columns etc. and essentially limits the Unit boundaries to the interior airspace between the perimeter walls and excludes all interior structural components. For the precise Unit boundaries, see Section 3.2 of the Declaration. For your reference, the area of the Unit, determined in accordance with these defined Unit boundaries, is set forth hereon (and labeled as "Unit Area"). Please note that the unique way of defining the boundaries actually makes the Unit appear to be smaller than it actually would be if standard architectural measuring techniques were used. Typically, apartments are measured to the exterior boundaries of the exterior walls and to the centerline of interior demising walls or to the exterior of walls adjoining corridors or other Common Elements without excluding areas that may be occupied by columns or other structural components.

S-1

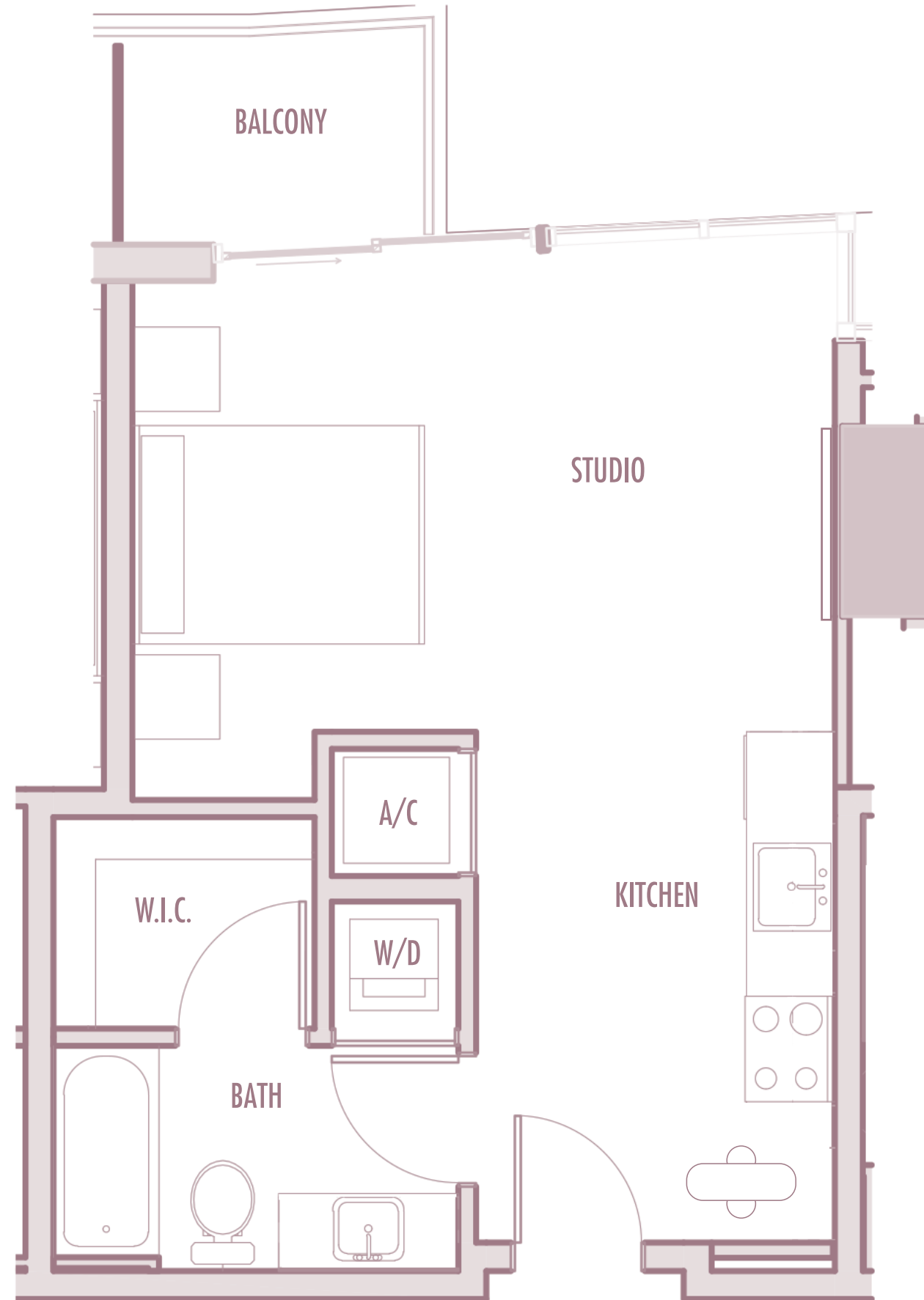
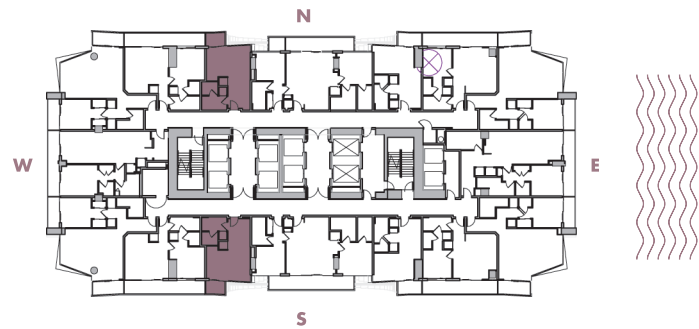
STUDIO

LEVELS : 36-37

INTERIOR : 465 SqFt 166 SqM

BALCONY : 40 SqFt 39 SqM

TOTAL : 505 SqFt 205 SqM



Given the nature of condominium ownership, the Unit boundaries are precisely defined in such a manner so that all components of the Building which are (or are potentially) utilized either by other Units or the Common Elements are excluded from the Unit. This would exclude, for instance, all structural walls, columns etc. and essentially limits the Unit boundaries to the interior airspace between the perimeter walls and excludes all interior structural components. For the precise Unit boundaries, see Section 3.2 of the Declaration. For your reference, the area of the Unit, determined in accordance with these defined Unit boundaries, is set forth hereon (and labeled as "Unit Area"). Please note that the unique way of defining the boundaries actually makes the Unit appear to be smaller than it actually would be if standard architectural measuring techniques were used. Typically, apartments are measured to the exterior boundaries of the exterior walls and to the centerline of interior demising walls or to the exterior of walls adjoining corridors or other Common Elements without excluding areas that may be occupied by columns or other structural components.

S-2

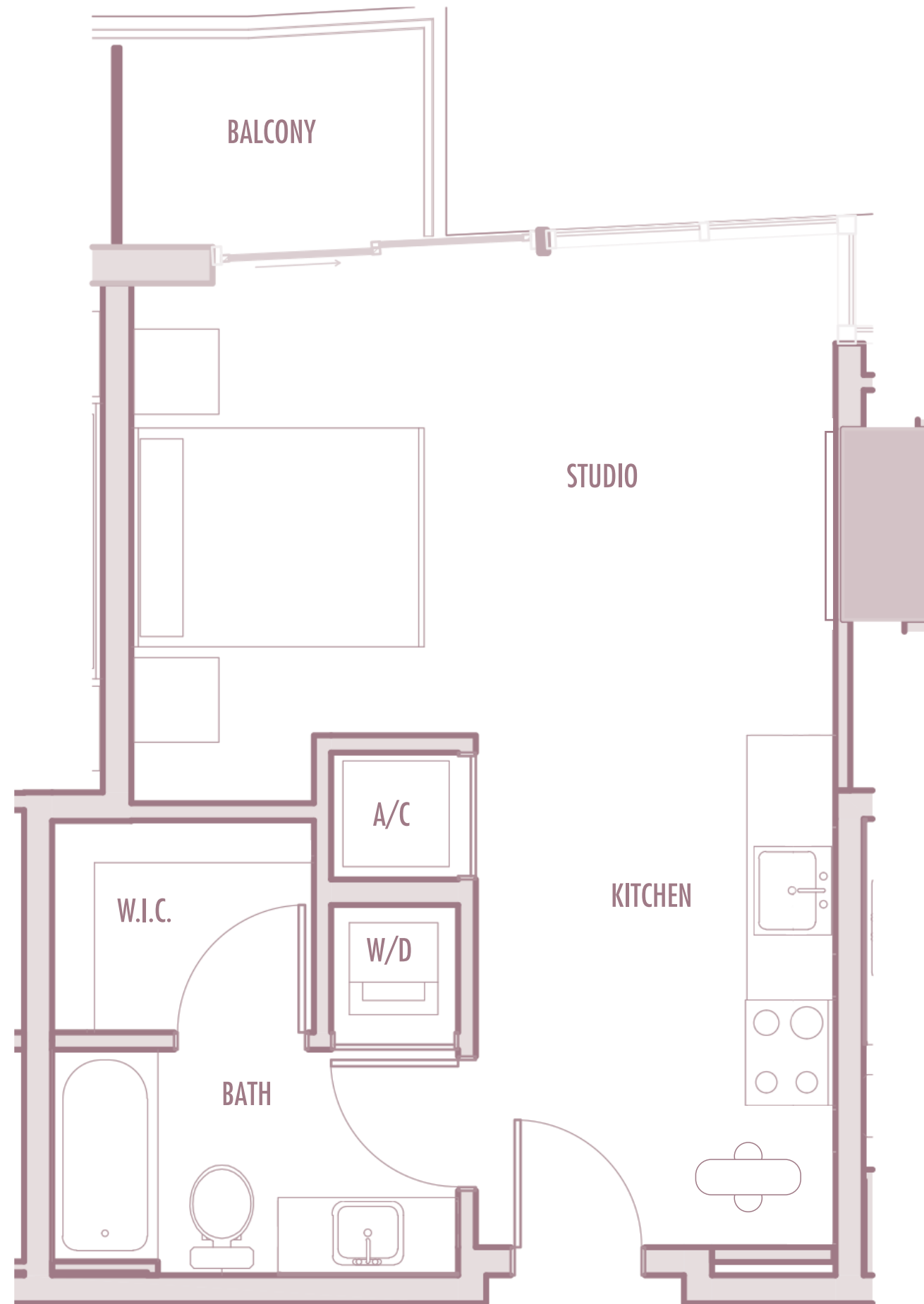
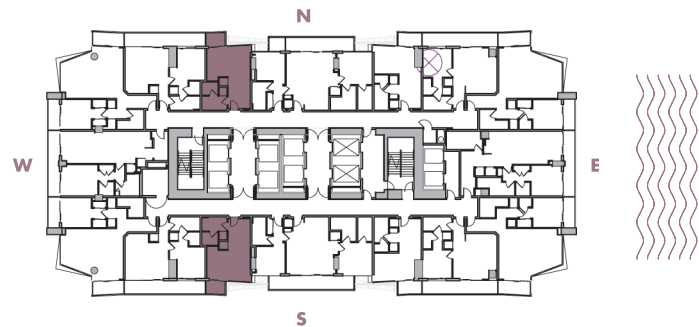
STUDIO

LEVELS : 38-41

INTERIOR : 460 SqFt 43 SqM

BALCONY : 40 SqFt 4 SqM

TOTAL : 500 SqFt 46 SqM



Given the nature of condominium ownership, the Unit boundaries are precisely defined in such a manner so that all components of the Building which are (or are potentially) utilized either by other Units or the Common Elements are excluded from the Unit. This would exclude, for instance, all structural walls, columns etc. and essentially limits the Unit boundaries to the interior airspace between the perimeter walls and excludes all interior structural components. For the precise Unit boundaries, see Section 3.2 of the Declaration. For your reference, the area of the Unit, determined in accordance with these defined Unit boundaries, is set forth hereon (and labeled as "Unit Area"). Please note that the unique way of defining the boundaries actually makes the Unit appear to be smaller than it actually would be if standard architectural measuring techniques were used. Typically, apartments are measured to the exterior boundaries of the exterior walls and to the centerline of interior demising walls or to the exterior of walls adjoining corridors or other Common Elements without excluding areas that may be occupied by columns or other structural components.

S-3

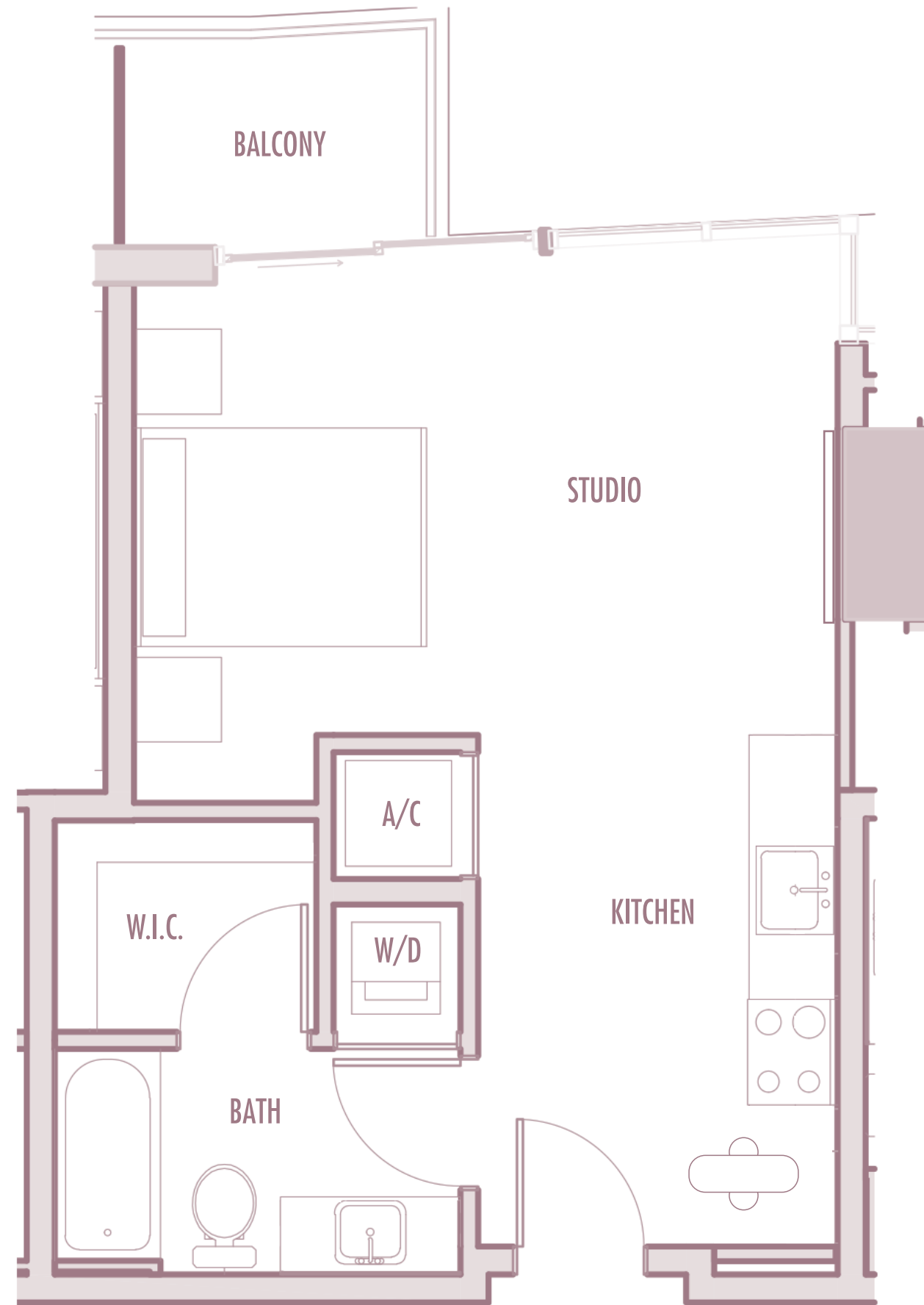
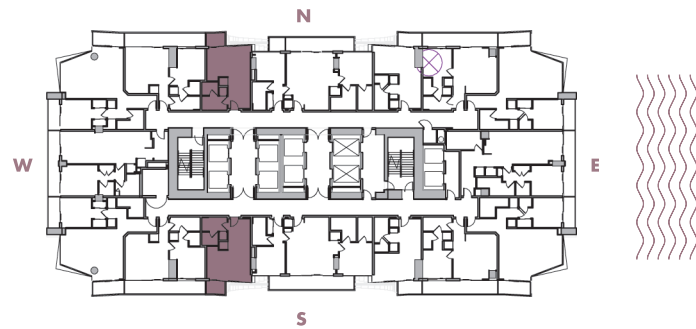
STUDIO

LEVELS : 42-49

INTERIOR : 455 SqFt 42 SqM

BALCONY : 40-45 SqFt 3,7-4,2 SqM

TOTAL : 495-500 SqFt 46-47 SqM



Given the nature of condominium ownership, the Unit boundaries are precisely defined in such a manner so that all components of the Building which are (or are potentially) utilized either by other Units or the Common Elements are excluded from the Unit. This would exclude, for instance, all structural walls, columns etc. and essentially limits the Unit boundaries to the interior airspace between the perimeter walls and excludes all interior structural components. For the precise Unit boundaries, see Section 3.2 of the Declaration. For your reference, the area of the Unit, determined in accordance with these defined Unit boundaries, is set forth hereon (and labeled as "Unit Area"). Please note that the unique way of defining the boundaries actually makes the Unit appear to be smaller than it actually would be if standard architectural measuring techniques were used. Typically, apartments are measured to the exterior boundaries of the exterior walls and to the centerline of interior demising walls or to the exterior of walls adjoining corridors or other Common Elements without excluding areas that may be occupied by columns or other structural components.

S-4

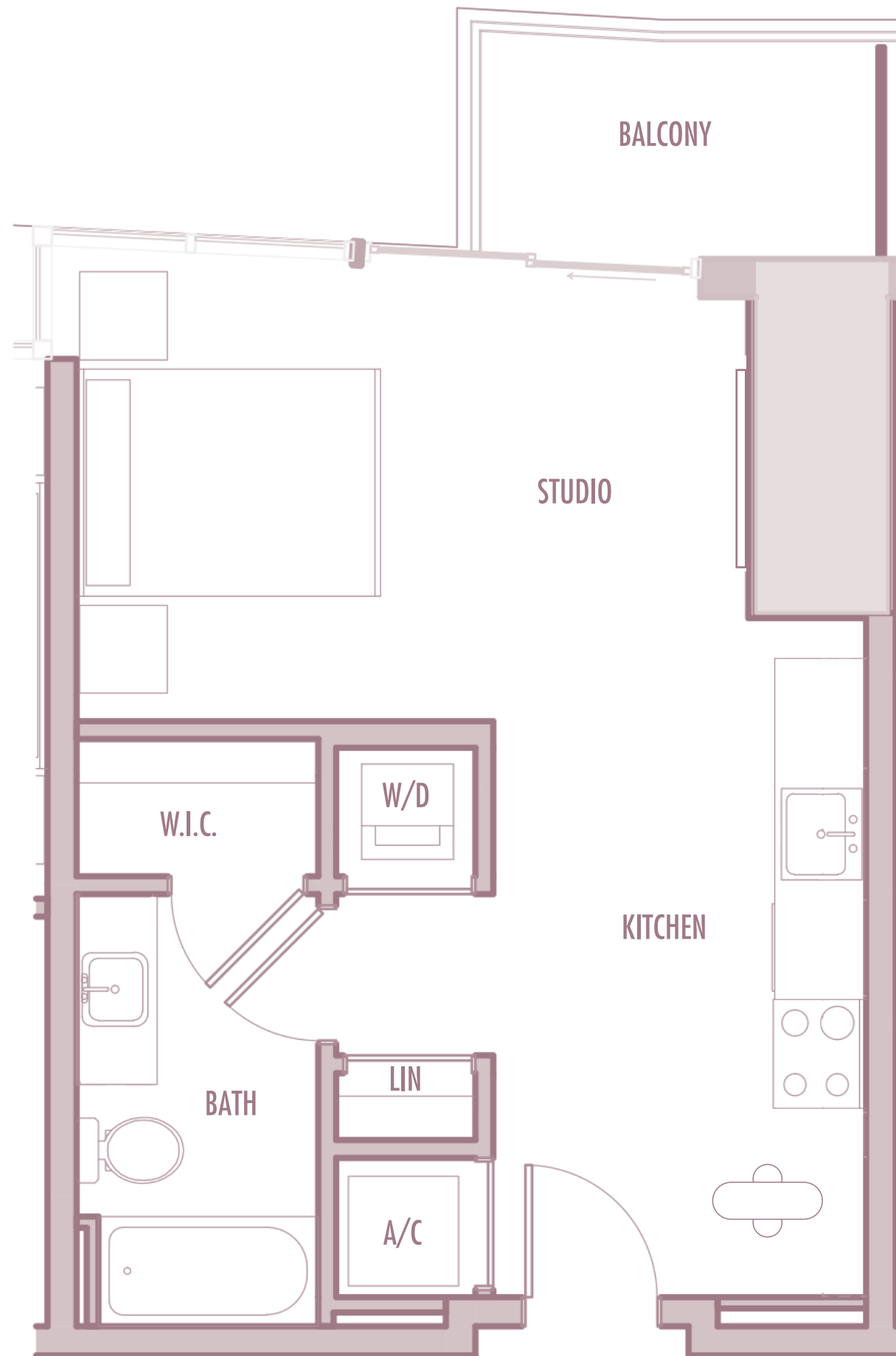
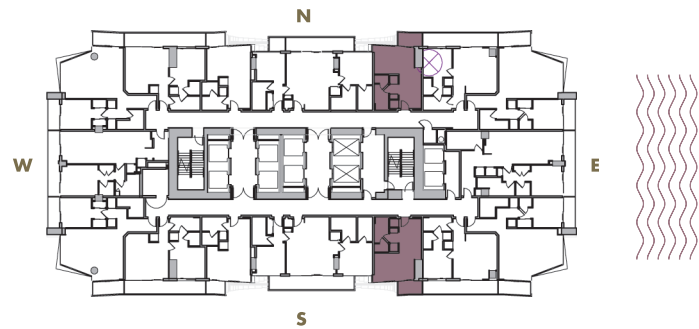
STUDIO

LEVELS : 36-38

INTERIOR : 455 SqFt 42 SqM

BALCONY : 50 SqFt 5 SqM

TOTAL : 505 SqFt 47 SqM



Given the nature of condominium ownership, the Unit boundaries are precisely defined in such a manner so that all components of the Building which are (or are potentially) utilized either by other Units or the Common Elements are excluded from the Unit. This would exclude, for instance, all structural walls, columns etc. and essentially limits the Unit boundaries to the interior airspace between the perimeter walls and excludes all interior structural components. For the precise Unit boundaries, see Section 3.2 of the Declaration. For your reference, the area of the Unit, determined in accordance with these defined Unit boundaries, is set forth hereon (and labeled as "Unit Area"). Please note that the unique way of defining the boundaries actually makes the Unit appear to be smaller than it actually would be if standard architectural measuring techniques were used. Typically, apartments are measured to the exterior boundaries of the exterior walls and to the centerline of interior demising walls or to the exterior of walls adjoining corridors or other Common Elements without excluding areas that may be occupied by columns or other structural components.

S-5

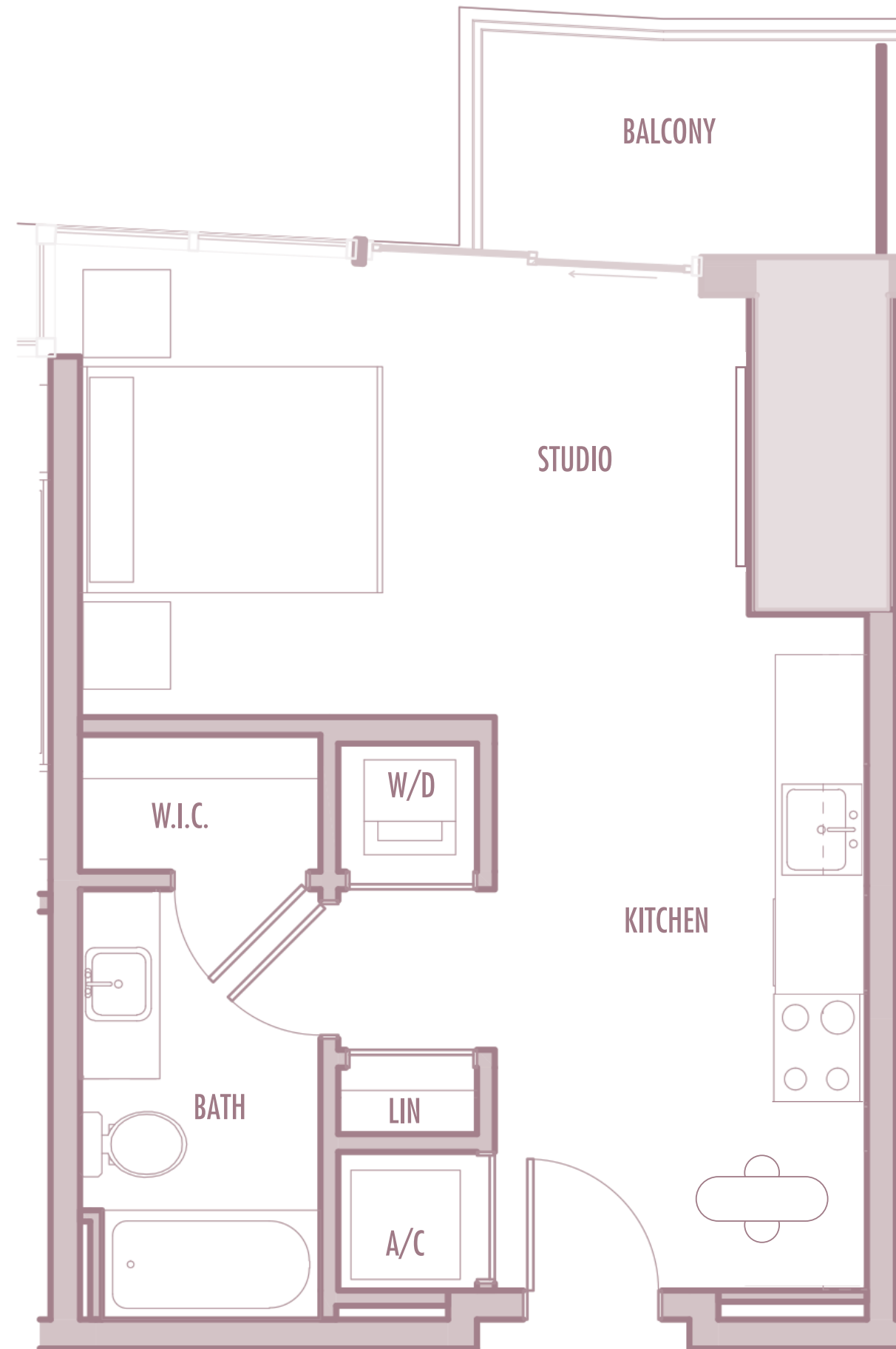
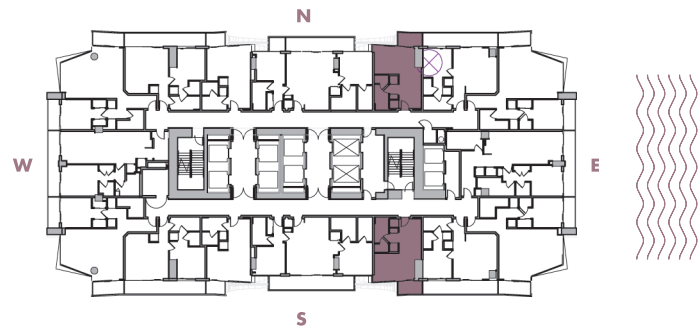
STUDIO

LEVELS : 39-44

INTERIOR : 450 SqFt 42 SqM

BALCONY : 50 SqFt 5 SqM

TOTAL : 500 SqFt 46 SqM



Given the nature of condominium ownership, the Unit boundaries are precisely defined in such a manner so that all components of the Building which are (or are potentially) utilized either by other Units or the Common Elements are excluded from the Unit. This would exclude, for instance, all structural walls, columns etc. and essentially limits the Unit boundaries to the interior airspace between the perimeter walls and excludes all interior structural components. For the precise Unit boundaries, see Section 3.2 of the Declaration. For your reference, the area of the Unit, determined in accordance with these defined Unit boundaries, is set forth hereon (and labeled as "Unit Area"). Please note that the unique way of defining the boundaries actually makes the Unit appear to be smaller than it actually would be if standard architectural measuring techniques were used. Typically, apartments are measured to the exterior boundaries of the exterior walls and to the centerline of interior demising walls or to the exterior of walls adjoining corridors or other Common Elements without excluding areas that may be occupied by columns or other structural components.

S-6

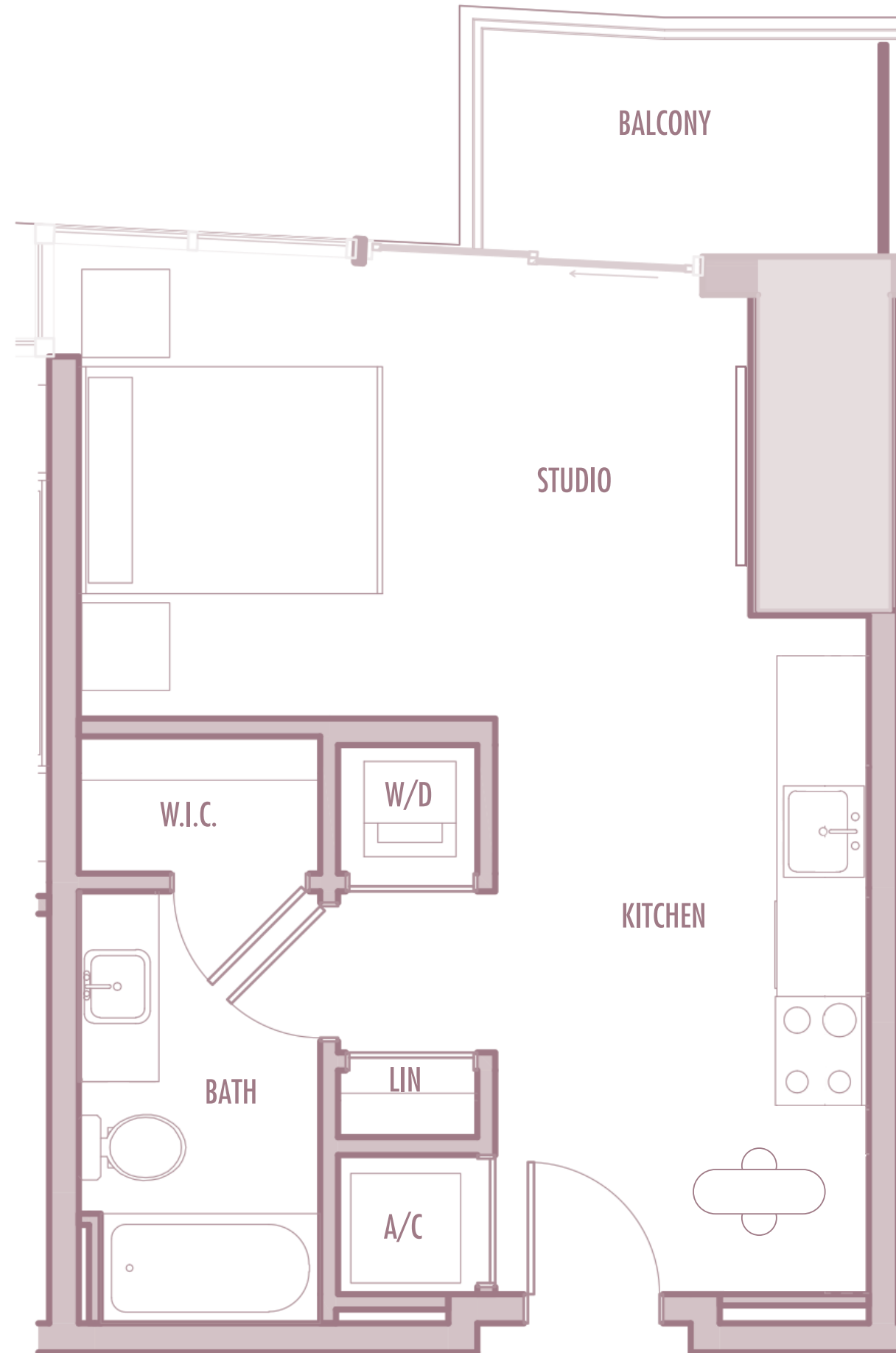
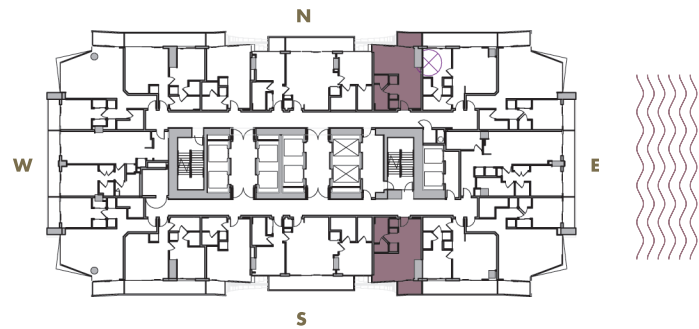
STUDIO

LEVELS : 45-48

INTERIOR : 445 SqFt 41 SqM

BALCONY : 50 SqFt 5 SqM

TOTAL : 495 SqFt 46 SqM



Given the nature of condominium ownership, the Unit boundaries are precisely defined in such a manner so that all components of the Building which are (or are potentially) utilized either by other Units or the Common Elements are excluded from the Unit. This would exclude, for instance, all structural walls, columns etc. and essentially limits the Unit boundaries to the interior airspace between the perimeter walls and excludes all interior structural components. For the precise Unit boundaries, see Section 3.2 of the Declaration. For your reference, the area of the Unit, determined in accordance with these defined Unit boundaries, is set forth hereon (and labeled as "Unit Area"). Please note that the unique way of defining the boundaries actually makes the Unit appear to be smaller than it actually would be if standard architectural measuring techniques were used. Typically, apartments are measured to the exterior boundaries of the exterior walls and to the centerline of interior demising walls or to the exterior of walls adjoining corridors or other Common Elements without excluding areas that may be occupied by columns or other structural components.

S-7

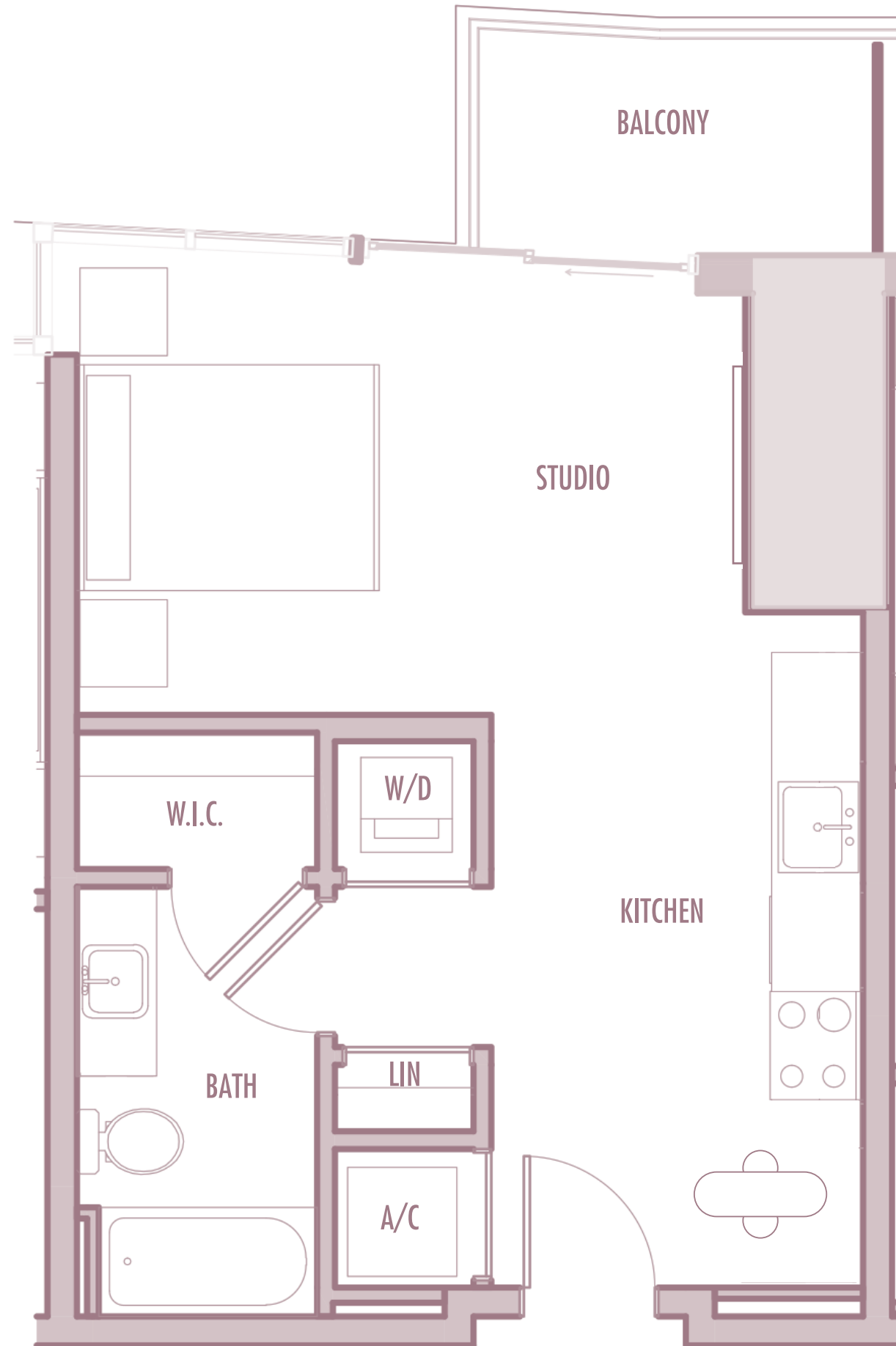
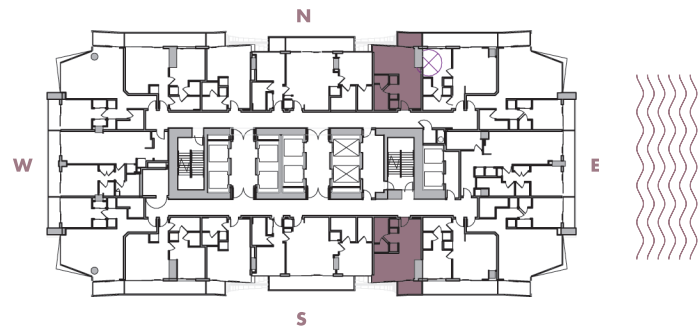
STUDIO

LEVELS : 49

INTERIOR : 450 SqFt 42 SqM

BALCONY : 55 SqFt 5 SqM

TOTAL : 505 SqFt 47 SqM



Given the nature of condominium ownership, the Unit boundaries are precisely defined in such a manner so that all components of the Building which are (or are potentially) utilized either by other Units or the Common Elements are excluded from the Unit. This would exclude, for instance, all structural walls, columns etc. and essentially limits the Unit boundaries to the interior airspace between the perimeter walls and excludes all interior structural components. For the precise Unit boundaries, see Section 3.2 of the Declaration. For your reference, the area of the Unit, determined in accordance with these defined Unit boundaries, is set forth hereon (and labeled as "Unit Area"). Please note that the unique way of defining the boundaries actually makes the Unit appear to be smaller than it actually would be if standard architectural measuring techniques were used. Typically, apartments are measured to the exterior boundaries of the exterior walls and to the centerline of interior demising walls or to the exterior of walls adjoining corridors or other Common Elements without excluding areas that may be occupied by columns or other structural components.